

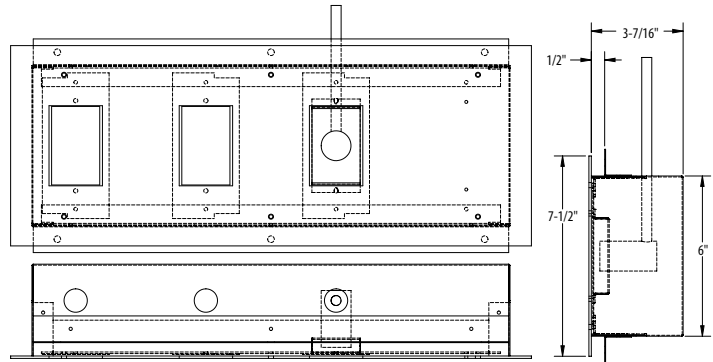
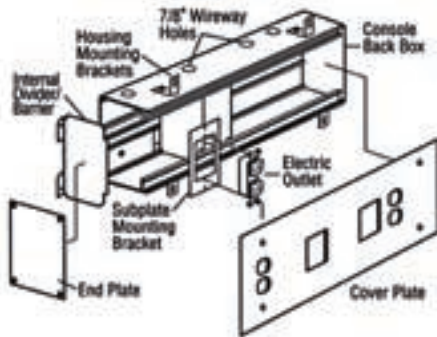
Med-Gas Service Consoles

Keep all of your key services within arm's reach. Whatever the need, O2, Air, Vacuum bottle, electrical power and nurse call communications. If it is not shown below, then tell us, and our engineers will make provisions for it.

- ✦ Contemporary, brushed aluminum face plate.
- ✦ Provides devices or provisions for virtually any gas valve type and communications system.
- ✦ Available as part of a lighting system or stand alone design.
- ✦ Isolated compartments for electrical, emergency, class 2 and med-gas devices.
- ✦ Customize the layout design to satisfy a facility and caregivers requirements.
- ✦ Fabrication begins only after submittal approval.



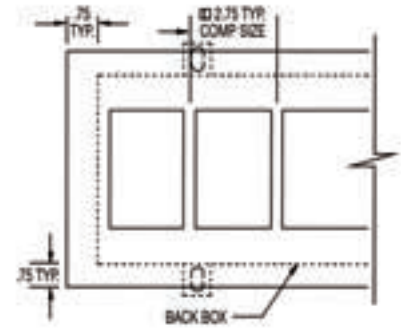
FEATURES



Specifications

(Specifications subject to change, consult web site for any revisions)

- Construction:** 20GA Galvanized steel housing and ends; heavy gauge aluminum face plate.
- Gas Outlets:** All major manufacturers, DSS and Quick Connect type fittings; both provision-only or factory sourcing are available.
- Slide Brackets:** Will accommodate standard vacuum bottles.
- Nurse Calls:** Provisions only; specify brand and model number for proper dimensions.
- Electrical:** Standard duplexes (ivory) and emergency duplexes (red) shall be 20 amp, Hospital grade type.
- Telephone:** Provisions only for phone jack; Finish plate and internal components by others.
- Special:** Contact factory for any special device not listed.
- Knock-outs:** Each gang shall have a 7/8 inch knock out to provide access to all devices gangs.
- Blanks:** All blanks consist of an empty gang area; face covers are devoid of all openings, outlines or markings; blanks are used to space out devices to a desired spacing.
- Standard Finish:** Housing back box is galvanized; face plate is brush aluminum.
- Listings:** UL/C-UL listed.



ORDERING INFORMATION

When ordering or requesting a quotation, please submit a console map using the below nomenclature on this sheet or from your own engineering diagrams.

1	2	3	4	5	6	7	8	9	10	11	12	13	14	16	17	18	19
Provisions only: <input type="checkbox"/>	Provisions only: <input type="checkbox"/>	Provisions only: <input type="checkbox"/>	Provisions only: <input type="checkbox"/>	Provisions only: <input type="checkbox"/>	Provisions only: <input type="checkbox"/>	Provisions only: <input type="checkbox"/>	Provisions only: <input type="checkbox"/>	Provisions only: <input type="checkbox"/>	Provisions only: <input type="checkbox"/>	Provisions only: <input type="checkbox"/>	Provisions only: <input type="checkbox"/>	Provisions only: <input type="checkbox"/>	Provisions only: <input type="checkbox"/>	Provisions only: <input type="checkbox"/>	Provisions only: <input type="checkbox"/>	Provisions only: <input type="checkbox"/>	Provisions only: <input type="checkbox"/>

Common Gas Outlets

- O2 Oxygen
- A Air
- V Vacuum
- NO2 Nitrous Oxide
- N2 Nitrogen
- CO2 Carbon dioxide

Common Device Accessories

- DX Duplex receptacle, 20a Ivory
- EDX Duplex receptacle, 20a Red
- TS Toggle switch, 20a, Ivory
- ETS Toggle switch, 20a, Red
- SL Vacuum bottle slide bracket
- GRD Hospital grade grounding jack
- TEL Provisions for Telephone jack

Nurse Call Provisions

- NC-11 1-gang Nurse Call
- NC-2 2-gang Nurse Call
- NC-3 3-gang Nurse Call
- NC-4 4-gang Nurse Call
- CB-1 1-gang Code Blue
- CB-2 2-gang Code Blue

Required Information

Nurse call brand: _____

Nurse call MDL #: _____

Code blue brand: _____

Code blue Mdl #: _____

Gas outlet type: _____

Gas outlet brand: _____

ATTENTION

All Console orders must have approved, factory-engineered drawings before release. Lead-times may vary. Contact the factory for delivery details.

