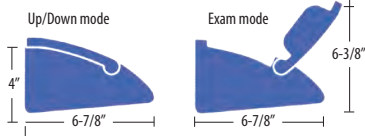


CHRYSALITE

3' or 4' (T8, T5 or T5HO)

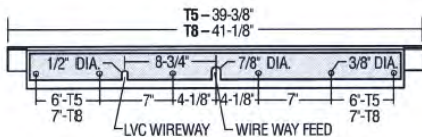
Dimensional Data

Side Profiles

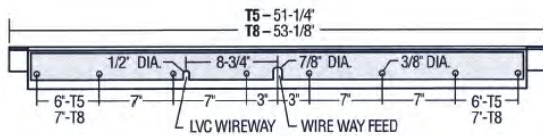


Mounting Dimensions

3' Back View



4' Back View



*Ordering Notes

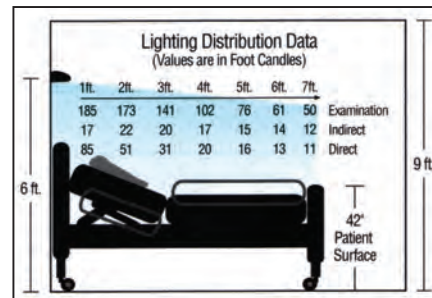
For pull chain and pillow switch, specify left or right location as viewed facing the headwall. Optional LED chart light with rocker switch is installed on opposite end of fixture from pull chain or pillow switch location.

Specifications subject to change. Please visit our web site for updated information.

Specifications

- Construction:** Extruded aluminum housing with diecast aluminum handles and stamped aluminum end caps.
- Electrical:** 120 or 277 volt.
- Lamp Shield:** High impact acrylic lens.
- Lamps:** 3 foot nominal: 25w T8, 21w T5 or 39w T5HO lamps (by others). 4 foot nominal: 32w T8, 28w T5 or 54w T5HO lamps (by others).
- Abf[a] S:** (1) 1w LED with rocker switch.
- Seismic:** 3' and 4' units OSHPD pre-approved (OPA-2087-07).
- BIM:** Building Information Modeling files available for 4' with T5HO lamps.
- Finishes:** Polyester powder coated after fabrication with either flat white or designer white antimicrobial finish.
- Listings:** UL and C-UL (1598: Medical and Dental luminaires).
- Warranty:** 5-year limited warranty. Made in the USA by Healthcare Lighting's ISO certified facility in Fairview, PA.

Photometric Data



HPW24; data shown with (4) 54w T5HO lamps on three circuits with convenience switch option for all-lamps-on examination lighting.

CHRYSALITE



Ordering Information

Example: HPW24-120-T8EL-21-S4L-LED-CC

1	2	3	4	5	6	7
SERIES	VOLTAGE	BALLAST	LAMPING	SWITCHING	OPTIONS	FINISHES
HPW23 (36")	120	T8EL	21 (2 Up, 1 Down)	LC Class 2 UL® listed Low Voltage Controller (LVC)	CS Convenience switch (Energizes both up and down lights upon rotation of top section into exam mode)	FW Flat white finish
HPW24 (48")	277	T5EL T5HO ^{#fl}	22 (2 Up, 2 Down)	LC1 LVC with pillow switch controlling down light only	LED 1w white LED Chart Light*	AM Designer white antimicrobial finish
				LC2 LVC with pillow switch controlling up and down light sequentially	BD Bed stop power cut off (Disrupts power to patient bed electrical outlet upon movement of light fixture housing on mounting bracket)	CC Custom Color (please provide color # or sample)
				S2R On/off pull chain on right (120v only)*	THD <10% THD (T8 only)	
				S2L On/off pull chain on left (120v only)*	FH Fast-blo fuse	
				S4R 4-pos pull chain on right (120v only)*	SB Slo-blo fuse	
				S4L 4-pos pull chain on left (120v only)*		
				SX No switch		

(1) 2up/2dn T5HO models include (3) ballasts and convenience switch for: (1) lamp up and (1) lamp down, and (4) lamp exam upon movement of top section to examination position.