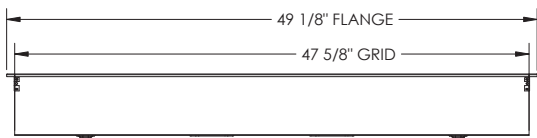


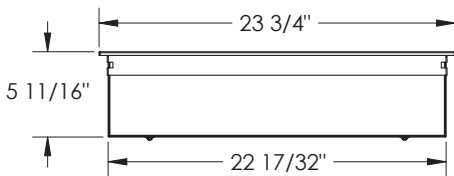
TRILUME T5/HO 2X4

Dimensional Data

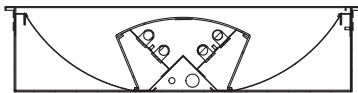
Side Profile



End Profile
(For both Grid and Flange)



4 Lamp Profile
(2L and 3L Profiles also available)



Specifications

- Construction:** 18GA steel housing and 24GA reflectors for flange or 1" grid ceilings.
- Electrical:** 120, 277 or universal voltage.
- Lamp Shield:** Extruded acrylic lens basket with perforated acrylic insert.
- Lamps:** (2, 3 or 4) 28w T5 lamps (by others); or (2) 54w T5HO lamps (by others).
See LVC options below.
- Sanitary Lens Option:** An 18GA CRS door with clear, acrylic lens forms a sealed enclosure over entire length of fixture. The outer lens surface is smooth and completely wipeable for infection control. Underneath sanitary lens, a perforated metal basket conceals ambient lamps. Perforated metal basket is polyester powder coated to match finish on housing.
- BIM:** Building Information Modeling files available for (4) T5 lamp profile on web site.
- Finishes:** Polyester powder coated after fabrication with either flat white or designer white antimicrobial finish.
- Listings:** UL and C-UL listed.
- Warranty:** 5-year limited warranty. Made in the USA by Healthcare Lighting's ISO certified facility in Fairview, PA.

Specifications subject to change. Please visit our web site for updated information.

TRILUME T5/HO (2X4)



Ordering Information

Example: HPT324-G-277-4LT5-SX-2C-FW

1	2	3	4	5	6	7	8
SERIES	MOUNTING	VOLTAGE	AMBIENT (LAMPS)	AMBIENT (LVCs)	AMBIENT (LIGHT LEVELS)	OPTIONS	FINISHES
HPT324	G T-Grid F Flange	120 277 UNV	2LT5 2LHO 3LT5 4LT5	LC Class 2 UL listed Low Voltage Controller (use for interface with existing nurse call pillow speaker/handset) LC1 LC plus 1-gang j-box cover with receptacle and pillow switch w/ 6' cord (use when nurse call system is unavailable) SX No LVC	1C 1 Circuit (On/off control of 2, 3 or 4 lamp ambient profile) 2C 2 Circuits (Tri-level control of 3 lamp or bi-level control of 4 lamp ambient profile) DM Dimming (Please specify type of ambient dimming. Switches/dimming controls by others. Only available with SX)	SL Sanitary Lens NLF 9w 4-pin (2G7) PL Night Light (Available with 2 lamp ambient profile only) LED 1w white LED Night Light (Available with 2 lamp ambient profile only) FH Fast-blo fuse SB Slo-blo fuse	FW Flat white finish AM Designer white antimicrobial finish